

simon  
community  
Northern Ireland

# Creating homes



## What a **Creating Homes** property means to our clients.

Donald became homeless at the age of 22 when his family home no longer was a safe and suitable living environment. Having nowhere to go, he contacted Simon Community and was provided with temporary accommodation. After 8 months with us, Donald had still not received an offer of a house through the Housing Executive due to the lack of social housing available. Being ready and able to move on and live independently again, Donald was delighted when our Housing Solutions team offered him one of our charity's Creating Homes.



*"I wanted to move forward with my life and gain my own independence and as soon as I viewed the house, I knew this was meant to be my home. I have been able to establish friendships and have joined a local football and badminton team. Having my own home has given me freedom and security whilst helping me to strengthen my relationships with family members."*

**Donald, former client**

## We are in a **homelessness crisis** and need your help!

For over 50 years, Simon Community Northern Ireland have been supporting people out of homelessness and through their journey to a stable home.

### **What is the problem?**

It is well recognised that today there is a real shortage of quality social housing across Northern Ireland. This, with the added high cost of the private rental sector, leaves our clients very little in the way of options when they need to move on from our temporary accommodation.

To continue with our **mission to end homelessness for people** who need our help, we are seeking to create well maintained, comfortable, and affordable homes for our clients that are managed by our charity.

This booklet explains how and why you can help us achieve this goal.



# Buy Homes

By committing to one of the packages below, you will become a Creating Homes Ambassador and help change the lives of those who are experiencing homelessness.

Your contribution, which can be made via corporate donations, staff fundraising or charity of the year activity **will all go towards property purchase.**

## **Bronze**

£2.5k donation

## **Silver**

£5k donation

## **Gold**

£7.5k donation

## **Diamond**

£10k donation

## **Platinum**

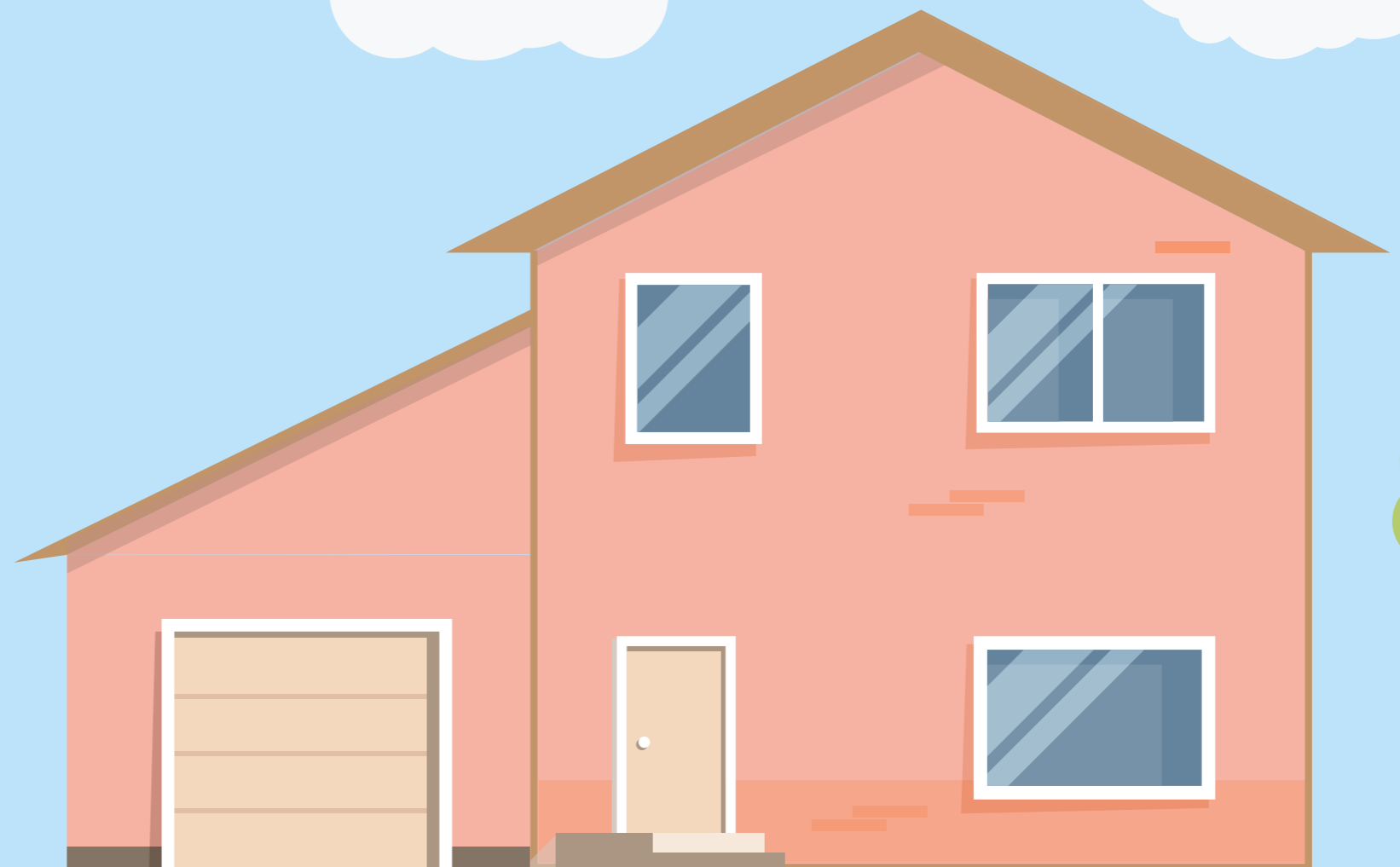
£20k donation

Your company, staff and brand will be making a lasting difference to NI's society - helping to end homelessness.

## **Benefits your company could receive include:**

- Align your business with NI's leading homelessness charity.
- Generate PR opportunities at the launch of the partnership, the opening of your Creating Homes house and at the close of the partnership.
- Receive a dedicated logo to use on your website, company literature and letterhead to show you are supporting the Creating Homes project.
- Receive a dedicated feature on your business on our digital channels.
- Be listed on and linked from our dedicated Creating Homes project webpage.
- Create engaging volunteer opportunities for your Staff.
- If your company is aiming to be a responsible business and has set Environmental, Social and Governance goals then this project can help you meet the "social" element of this target.

For more information, to discuss how your business can make a pledge, or to tailor a sponsorship benefits package for your organisation, please contact [creatinghomes@simoncommunity.org](mailto:creatinghomes@simoncommunity.org)



# Buy Fixtures

You can help people move into their new home by sponsoring one of our following packages:



## New Home Welcome Pack - £250

Provide someone, or a family, with the basic but essential household goods they need to run a home: towels, toiletries, first shop, first month's electric, washing liquid, laundry items, mop, vacuum and cleaning products. Taking pride in their new home will help individuals to build self-esteem and a sense of self-worth.



## Living Room Package- £750

By sponsoring a living room pack your business will give someone, or a family, entering their new home the essentials for their family space: sofa, armchair, coffee/side tables, lamp, curtains, cushions and rug. Helping someone, or a family, who has been used to communal spaces in temporary accommodation create their own homely haven.



## Bathroom Package - £1,000

Kit out the bathroom of one of our homes by helping provide new sanitary ware, fittings, towels and essential toiletries. Giving someone, or a family, an up to date, working, private bathroom will provide the dignity we all deserve.



## Paint Pack - £1,000

Create a refreshed home for someone, or a family, to move into by sponsoring the painting of the interior of one of our houses. A clean, bright, welcoming canvas for someone, or a family, who has experienced homelessness to put their own stamp onto.



## Bedroom Package - £1,500

This package enables us to furnish a single and a double room in a two-bed house. Your sponsorship will provide: beds, mattresses, bedside cabinets, chest of drawers, wardrobe, curtains, bedlinen, pillows and duvets. Providing someone, or a family, with their very own bed helps restore a sense of security and contentment.



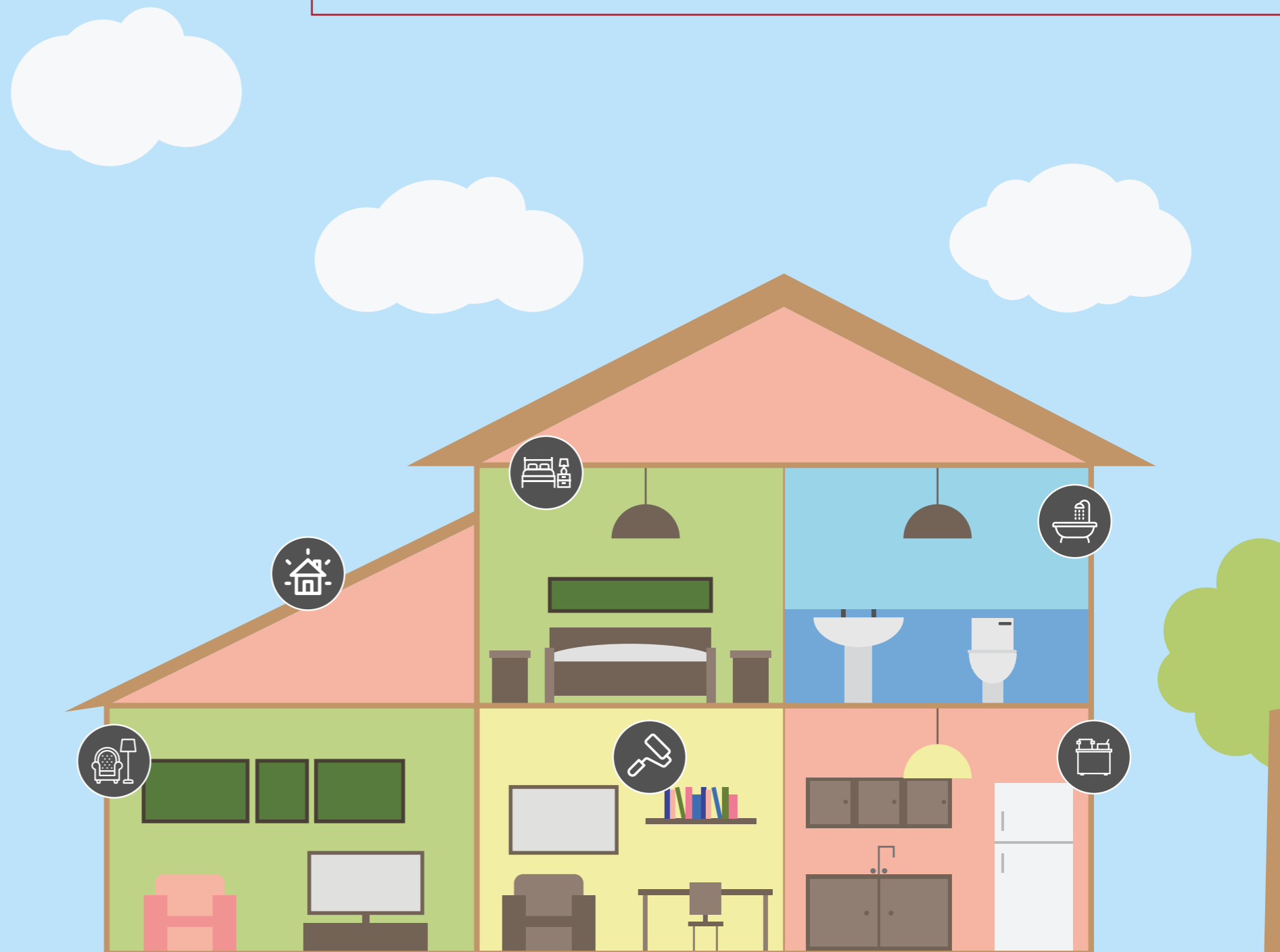
## Kitchen Package - £1,750

By sponsoring the Kitchen Kit Out package your business will provide the essential washing and cooking equipment required in a home: table and chairs, fridge freezer, microwave, cooker, washing machine, crockery, cutlery and utensils. Create a lasting impact by providing the heart of a new home.

## Benefits your company could receive include:

- Align your business with NI's leading homelessness charity.
- Generate PR opportunities around your donation.
- Feature in a dedicated social media post on our digital platforms.
- Have your logo on our dedicated Creating Homes project webpage.
- Receive a Creating Homes certificate to acknowledge your support.
- If your company is aiming to be a responsible business and has set Environmental, Social and Governance goals then this project can help you meet the "social" element of this target.

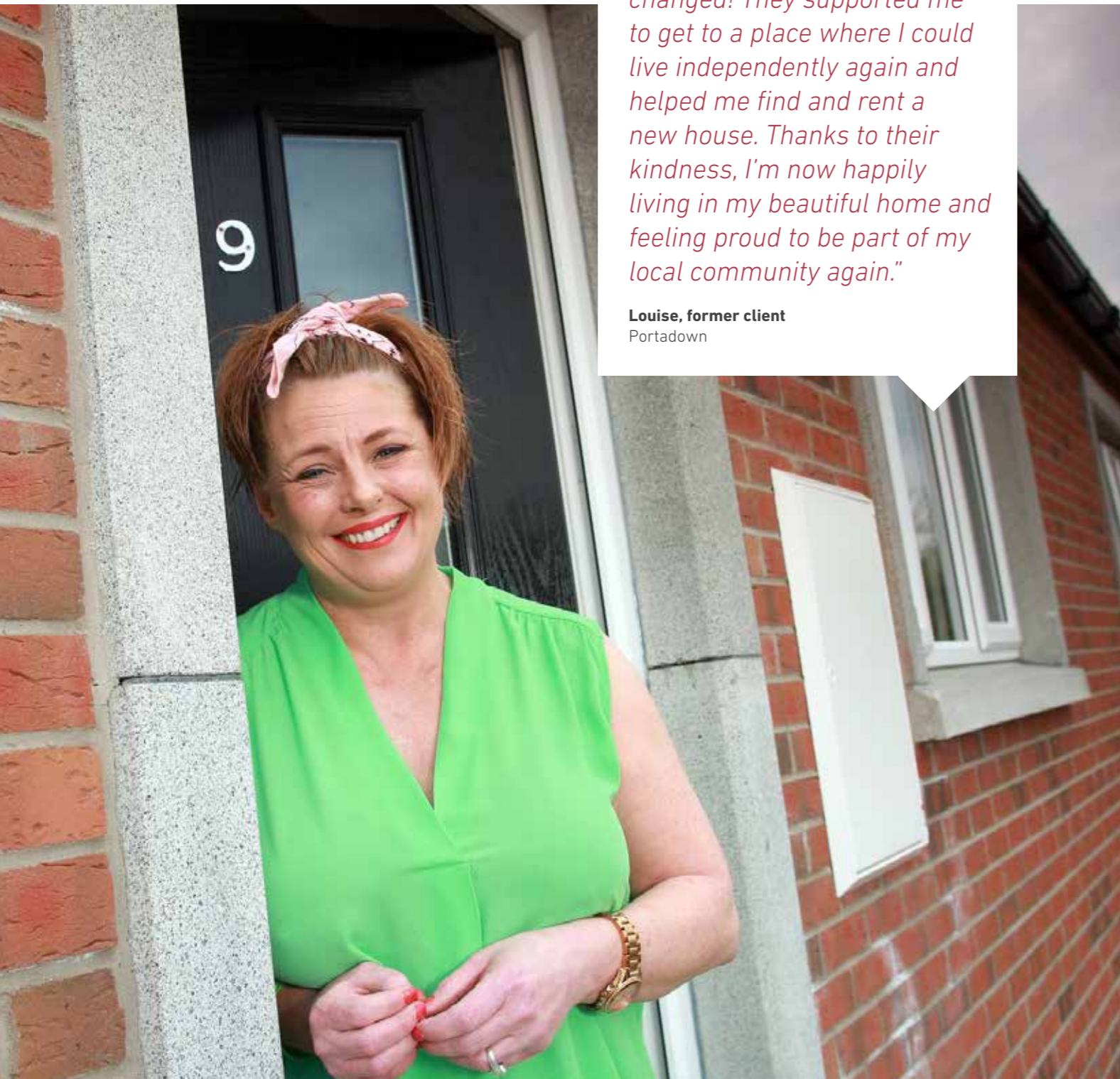
For more information, to discuss how your business can make a pledge, or to tailor a sponsorship benefits package for your organisation, please contact [creatinghomes@simoncommunity.org](mailto:creatinghomes@simoncommunity.org)



**Could your**  
business help  
create a home  
for someone  
like Louise?

*"When my mum died, I ended up in a dark place as my mental health and addiction issues spiralled out of control. I was at rock bottom, eventually became homeless and considered taking my life during this very difficult time. But after being introduced to Simon Community, everything changed! They supported me to get to a place where I could live independently again and helped me find and rent a new house. Thanks to their kindness, I'm now happily living in my beautiful home and feeling proud to be part of my local community again."*

**Louise, former client**  
Portadown



# Tax Efficient Giving

While creating much needed homes, your limited company can pay less Corporation Tax when it gives money to Simon Community NI. Simply deduct the value of the donations from your total business profits before you pay tax.

[www.gov.uk/tax-limited-company-gives-to-charity](http://www.gov.uk/tax-limited-company-gives-to-charity)

# Help us create homes and futures for people like Phil

*"After redundancy and a marital breakdown, depression consumed my life as I tried to maintain a home that I couldn't afford. Every day for four years, I lived in fear that the bank would evict me or worse, that my loved ones would find out about my circumstances. I became antisocial, homeless, ill and even considered taking my own life. However, I luckily crossed paths with Simon Community and life began to improve. They helped me regain my confidence, were there when I needed support and found me a flat that was suited to my needs. Having a place to call a forever home is wonderful; I now hold my head high and I'm back to feeling like the happy me again."*

**Phil, former client  
Belfast**





Together we can end homelessness.

Thank You

To support our Creating Homes project contact:  
[creatinghomes@simoncommunity.org](mailto:creatinghomes@simoncommunity.org)

To learn more about what we do visit [www.simoncommunity.org](http://www.simoncommunity.org)

Check out our social media for photos and news.

-  @SimonCommNI
-  SimonCommunity
-  @SimonCommunityNI
-  @simon-community-ni

Details correct at time of print

Charity Number - NIC 102724

